



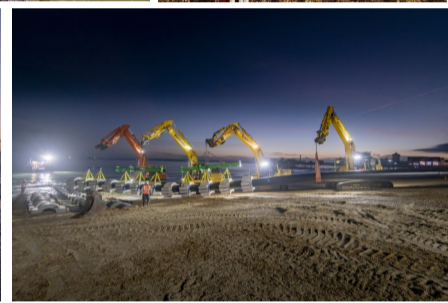
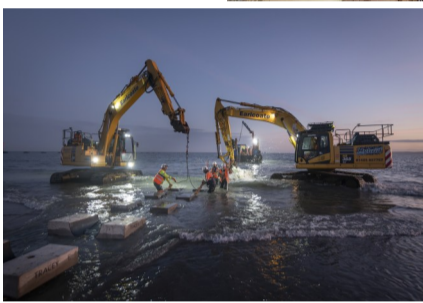
“Out, Out” @ Eastney Outfall



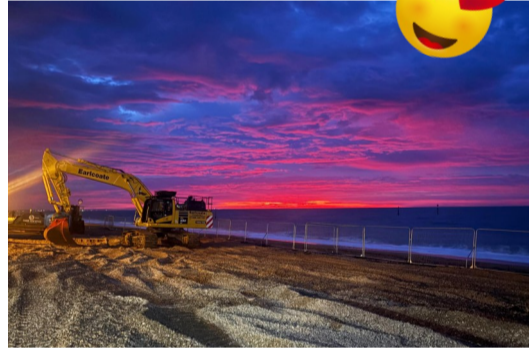
The multi-award-winning Southsea Coastal Scheme is the UK’s largest local authority-led coastal defences project, helping to reduce the risk of flooding to more than 10,000 homes and 700 businesses. As part of these vital coastal defence improvements, around one million tonnes of beach material has been added to the beach at Eastney in Portsmouth, doubling the width of the beach. At the same time the Canoe Lake outfall pipe has been extended. Enter Earlcoate! The underground pipeline that runs from Canoe Lake under the promenade and the beach to the sea drains and fills the pond. The outfall pipe was extended by 60m to ensure the end of the pipe remains exposed under the water following the planned 45m extension of the beach. The 60m long x 710mm diameter pipe was encased in bespoke precast concrete collars at 2m intervals to weight the pipe to the sea bed. The pipeline was fusion welded together on the beach and twelve precast concrete collars attached, before being lifted into position by five of our excavators working in perfect unison. Seawork Marine Ltd’s dive team, based on Williams Shipping ‘Will Jive’, then cut off the seaward end of the pipe to allow it to flood and sink into position. We could then place the remaining collars and connect to the old landward outfall position. All went to plan and praise received from Boskalis (the main contractor) with a big sigh of relief all round!



All our big plant was down there; the PC700, the PC490, the HB365, the PC210 and the PC138. Thank you to the team; Micky Tanner, Jason Cronk, Nick Barrett, Mark Burton, Mark Roll, Raddich Disca, Cat Puia, Rob Disca, Tim Melbourne, Martin Dominy, Steven Cooper and Andy.

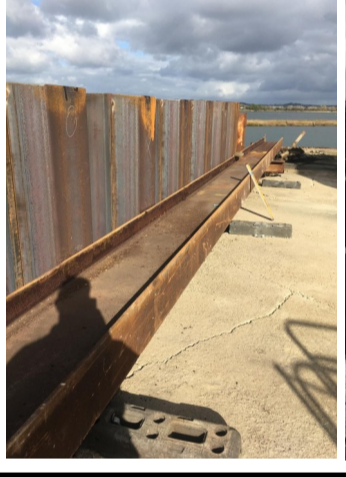


Early Mornings Have Their Silver Linings!



WORK IN PROGRESS COBBS QUAY PILING!

Neal Cooke, Jason Cronk, Dave Kyte and Bill Munday working their magic on the piling front, for MDL at Cobbs Quay!



We wish Ben Halton from DP World the absolute best of luck with his second marathon, being run, once again, in aid of Children with Cancer. We are delighted to support Ben with such a worthy cause, and the story of his motivation to support them again was heartfelt.

SHOUT OUT 📣

“Congratulations with the successful installation of the PE outfall pipe. Well done!”

Gerrit Jan van den Bosch, Boskalis Westminster

BOURNEMOUTH AIRPORT CARGO STAND—UP AND RUNNING!



Remember the Cargo Stand at Bournemouth Airport? We were delighted to see the promotional video released by Cargo First as they showcased their new cargo stand. With some amazing drone footage it really showed off the fantastic job that we completed.

Great to see the fruits of our labour in action, and great to see that our quality of work is resulting in further enquiries from Bournemouth Airport, and beyond.

In September, Earlcoate were the feature company in Bulk and Tipper magazine, with a brilliant eight page spread. Here’s a snip of what they had to say, with just a sample of the brilliant pictures they took.



BULK & TIPPER

“Venture to the heart of the New Forest in the south of England and you’ll find the headquarters of Earlcoate Construction and Plant Hire—a business established by Alister Cutts in 1997. But much of its current work takes it to the water’s edge, where its projects have included sea defences and dock developments”, writes John Challen from Bulk and Tipper publication.

ROCK SOLID

WHETHER IT’S BUILDING STONE SEA DEFENCES OUT OF NORWEGIAN ROCK, CONSTRUCTING FACILITIES FOR HAULIERS OR SAVING HISTORIC BUILDINGS, EARLCOATE CONSTRUCTION AND PLANT HIRE’S CIVIL ENGINEERING EXPERTISE CANNOT BE OVERSTATED. AND NOR CAN THE TOUGHNESS OF ITS TRUCKS. WRITES JOHN CHALLEN



To the Rescue @ Mundeford Jetty, Christchurch



A delightful, short ferry journey operates between Mundeford Quay and Hengistbury Head in Christchurch, Dorset. Essential work to the jetty used by the ferry was required to ensure the continued ferry services to Mundeford Sandbank. Earlcoate were contracted to dismantle and re-build the jetty with new support piles and bracing steelwork.

A challenging timescale to dismantle, refurbish and rebuild, all within four weeks, in order to minimise the closure of the ferry. High tides and early starts didn't stop us, and another successful project delivered on time and within budget was achieved, thanks to Peter Waterman, Steve Brooks, Andy Goudge, Ashley Paskins, Shane Whittall, Mark Roll and Bill Munday.

During normal operating hours, the ferry operates between Mundeford Quay and the Beach at Mundeford Sandbank approximately every fifteen minutes and serves as a convenient way for residents and visitors to travel between Mundeford Quay and Hengistbury Head. If you've never been, it's worth a visit, summer or winter it is a pleasant walk, and you'll see some of the most expensive beach huts in the country!

Great team work on a tight programme. Thank you lads!



WE WISH YOU ALL THE
VERY BEST FOR A
SUPER CHRISTMAS
AND A
WONDERFUL NEW
YEAR!



NEW FOREST HOUNDS

Point-to-Point Sunday 14th December 2025

Larkhill Racecourse

Charity Race 11:15am / First Race 12:00pm

A Day at the Races - Point to Point at Larkhill

We are delighted to be supporting the New Forest Hounds Point to Point at Larkhill Racecourse again this year!

Always a great day—but definitely need to wrap up warm, it can be cold on the course.

A lovely pre-Christmas meet!

